




Parkinson's Disease (PD) is a progressive neurological disorder that affects more than 1.5 million people nationally including several thousand in Maine. Symptoms include spontaneous movements, difficulty walking, shaking, slow or uncontrolled facial expressions, rigidity and tremors. Although research is being done, the cause is still unknown and there is no cure. However, new advances in treatment and research are very hopeful. Please help improve the quality of People with Parkinson's disease and support MEPS.

MAINE PARKINSON SOCIETY

The Maine Parkinson Society (MEPS) is a Maine based non-profit organization founded to improve the quality of life for people in Maine with Parkinson's Disease. Funds raised generate general awareness of Parkinson's disease, group support information and as well as specialized programs for Maine individuals with Parkinson's disease. If you would like more information, please call: 1-800-832-4116 or Email: info@maineparkinson.org
Like us on Facebook

Maine Parkinson Society
146 Parkway South, Ste. 210
Brewer, ME 04412
1-800-832-4116
www.maineparkinsonsociety.org



Non Profit Org
US Postage Paid
Permit 46
Bangor ME

*Please Help
Cultivate Hope
for People with
Parkinson's Disease*

CULTIVATE HOPE

For People with Parkinson's Disease One Tulip at a time



Dr. James Parkinson tulips represent hope for a world free of Parkinson's Disease and better living for those with it. Please help spread awareness and improve the quality of life for people in Maine with Parkinson's Disease.

MAINE PARKINSON SOCIETY

www.maineparkinsonsociety.org
Tel: 207-992-9978 / 1-800-832-4116
info@maineparkinson.org

CULTIVATE HOPE

for People with Parkinson's Disease

*"A great opportunity to thank clients
and help another growing population!"*

Karen Marsters, President
Maine Parkinson Society

DR. JAMES PARKINSON TULIP BULBS

Plant a "Garden of Hope" with these beautiful red and white cultivars. Shipped directly from Holland, you will receive your Dr. James Parkinson tulip bulbs in mid-September - just in time for planting. Order by July 15 to ensure a beautiful "Garden of Hope" next spring!



TULIP PINS

Help raise awareness of Parkinson's Disease by wearing a Dr. James Parkinson tulip pin. Worn by men and women alike, these attractive gold plated pins have an enameled red tulip, edged in white with a green leaf.

WEDDING TULIPS

Tulip bulbs make a great wedding favor. They arrive in mid-September and need to be planted in the fall which makes them perfect for a fall wedding. Tulip cards and tulip pins are also available to use as wedding favors. Give your guest a unique favor and let them know you supported the Maine Parkinson Society and Maine people with Parkinson's Disease.

NOTE CARDS

Our tulip note cards are beautiful reproductions of watercolor paintings by a local Maine artist, Judy Segal. Each set contains 5 note cards (one of each design) with envelopes and are blank on the inside to write your own personal message.



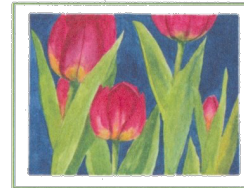
1



2



3



4



5

**PLEASE
PLACE TULIP BULB
ORDERS BY JULY 15**

TULIP ORDER FORM

Complete this order form
and send it with
your payment to:



Maine Parkinson Society
146 Parkway South, Ste. 210
Brewer, ME 04412

NAME _____

ADDRESS _____

ADDRESS _____

CITY _____

STATE _____

ZIP _____

EMAIL ADDRESS _____

PHONE _____

Bags of 10 Tulip Bulbs \$ _____
(\$15.00/bag)

Bags of 200 Tulip Bulbs \$ _____
(\$135.00/bag)

Tulip Pins \$ _____
(\$6.00/each)

Tulip Note Cards \$ _____
(\$12.00/set of 5)

We want to donate! \$ _____

SUBTOTAL \$ _____
Ask us about discounts
for larger volumes!

TOTAL \$ _____

Shipping and Handling Included

Online orders may be placed at: www.maineparkinsonsociety.org/shop

